

Swift Cup Europe 2026 SEASON

7 weekends / 2 categories / from 12 years old*

GROBNIK SALZBURGRING POZNAN MOST SLOVAKIARING BRNO HUNGARORING





The cars

1.4 TURBO SCE GEN 3. SINCE 2019

Chassis:	All cars built by GFS Racing. Suzuki Swift Sport with FIA safety equipments, welded safety rollcage.
Engine:	K14C engine (1377cc) with original turbo 1.5 bar Ecu by GFS Racing * REMUS exhausting system * Thorsen Cup differential lock
Horsepower:	170HP @ 4200 Rpm
Torque:	300NM @ 3000 Rpm
Transmission:	6 speed / manual
Configuration:	Front-wheel drive
Max speed:	220 km/h

3 newly conditioned cars available for rent or purchase. (yellow, white and burgundy)

Minimal weight (without driver): 920 kg
Nankang CRS semi-slick tyres 195/50R15
Braid 7x15 ET36 rims
Öhlins dampers
AIM Solo Telemetry
Tarox brakes



The cars

1.6 SCE GEN 2. SINCE 2014



Chassis: All cars built by GFS Racing. Suzuki Swift Sport with FIA safety equipments, welded safety rollcage.

Engine: M16A engine (1586cc)
Ecu by GFS Racing * Proex exhausting system * Thorsen Cup differential lock

Horsepower: 140HP @ 4200 Rpm

Torque: 170NM @ 3000 Rpm

Transmission: 6 speed / manual

Configuration: Front-wheel drive

Max speed: 220 km/h

1 newly conditioned car available for rent or purchase. (white)

Minimal weight (without driver): 930 kg

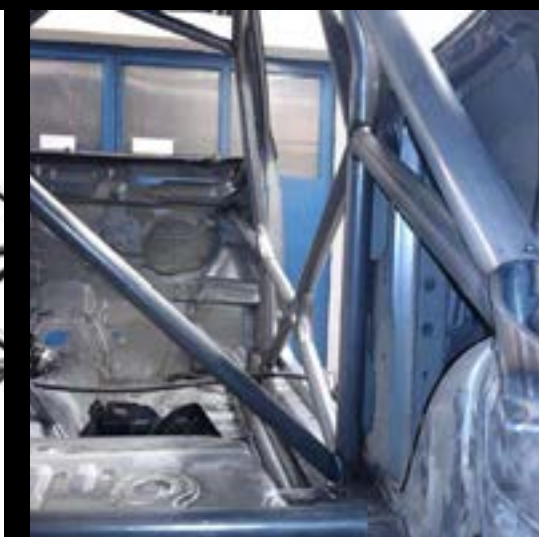
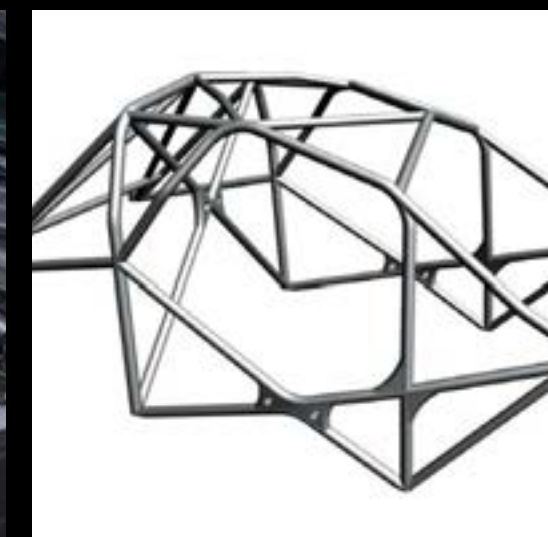
Nankang CRS semi-slick tyres 195/50R15

Speedline 7x15 ET36 or Braid 7x15 ET36 rims

Intrax dampers

AIM Solo Telemetry

Wilwood brakes





Price

SWIFT CUP EUROPE CAR GEN3 1.4 TURBO

- Price:** 29.000 € + VAT
- Buying procedure:** 30% deposit + completed order form
Order confirmation upon reception of deposit & order form
Billing and delivery procedure confirmed soon after by GFS Racing
- Categories:** **Swift Cup Europe International**
1.4 Junior (from 14 years old*), 1.4 Austria, 1.4 Poland, 1.4 Hungarian

SWIFT CUP EUROPE CAR GEN2 1.6

- Price:** 15.000 € + VAT
- Buying procedure:** 30% deposit + completed order form
Order confirmation upon reception of deposit & order form
Billing and delivery procedure confirmed soon after by GFS Racing
- Categories:** 1.6 International, 1.6 Junior (from 12 years old*), 1.6 Senior

*Junior: From 12 to 16 years old drivers only in Hungarian Championship with special permission

Plus national categories: From 3 drivers each nations



Rent

SUZUKI SWIFT 1.4 T / WEEKEND

(ALL PRICES ARE NET, VAT NOT INCLUDED)

REGISTRATION FEE (ONCE A YEAR)	250 €	
ENTRY FEE	1000 €/1350 €	(2 races/weekend 1000 €, 3 races/weekend 1350 €, 1 free practice, 1 qualifying, 2 or 3 races included)
RENTAL FEE	1300 €	
SERVICE	1100 €	
4 TIRES (NANKANG CRS)	780 €	(4 new tires are mandatory for the qualifying and races, but 2 more extra tires are available)
TIRES MOUNTING (4 TIRES)	40 €	
FUEL (APPR. 100L)	200 €	
TRANSPORT (AVERAGE)	250 €	
BRAKE	400 €	
TOTAL	5070 €/5420 €	



Rent

SUZUKI SWIFT SPORT 1.6/ WEEKEND

(ALL PRICES ARE NET, VAT NOT INCLUDED)

REGISTRATION FEE (ONCE A YEAR)	250 €	
ENTRY FEE	1000 €/1350 €	(2 races/weekend 1000 €, 3 races/weekend 1350 €, 1 free practice, 1 qualifying, 2 or 3 races included)
RENTAL FEE	900 €	
SERVICE	900 €	
4 TIRES (NANKANG CRS)	780 €	(4 new tires are mandatory for the qualifying and races, but 2 more extra tires are available)
TIRES MOUNTING (4 TIRES)	40 €	
FUEL (APPR. 100L)	200 €	
TRANSPORT (AVERAGE)	250 €	
BRAKE	250 €	
TOTAL	4320 €/4670 €	



Calendar 2026 SEASON

CROATIA
FIA CEZ / GT CUP / TCR EE

15-17 MAY 2026 - GROBNIK

AUSTRIA
FIA CEZ F4 / TCR EE

29-31 MAY 2026 - SALZBURGRING

POLAND
POLAND NAT. SERIES

10-12 JULY 2026 - POZNAN

CZECH REP.
FIA CEZ / GT CUP / TCR EE

31 JULY - 2 AUGUST 2026 - MOST

SLOVAKIA
FIA CEZ / GT CUP / TCR EE

21-23 AUGUST 2026 - SLOVAKIARING

CZECH REP.
FIA CEZ / GT CUP

11-13 SEPTEMBER 2026 - BRNO

HUNGARY
FIA CEZ / ESET V4

23-25 OCTOBER 2026 - HUNGARORING

LIVE!

**ALL RACES OF THE SEASON ON LIVE TV ON
FACEBOOK AND YOUTUBE ! ALSO AVAILABLE ON
REPLAY.**



Weekend format

FRIDAY	FREE PRACTICE 25 MINUTES
FRIDAY	QUALIFYING 20 MINUTES
SATURDAY	RACE 1. 25 MIN + 1 LAP
SUNDAY	RACE 2. 25 MIN + 1 LAP / FIRST 8 DRIVERS REVERSED
	OPTIONAL / WHERE'S POSSIBLE
SUNDAY	RACE 3. 25 MIN + 1 LAP / FIRST 8 DRIVERS REVERSED
PODIUM CEREMONIES	INTERNATIONAL 1.4T INTERNATIONAL 1.6 CATEGORY HUNGARIAN, POLAND, AUSTRIAN AND OTHER NATIONAL 1.4T JUNIOR 1.4T JUNIOR 1.6 SENIOR 1.6

Entries

REGISTRATION	THE NON-REFUNDABLE REGISTRATION FEE FOR THE 2025 SWIFT CUP EUROPE IS 250 € INCLUDING VAT PER DRIVER. DEADLINE OF THE REGISTRATION: 15 APRIL 2026
THE ENTRY FEES RACE BY RACE (VAT INCL.)	1000 € / 2 RACES + 1 FREE PRACTICE (2 RACES FORMAT) 1350 € / 3 RACES + 1 FREE PRACTICE (3 RACES FORMAT)
ENTRY FEE FULL SEASON (VAT INCL.)	7600 € / SEASON / 7 WEEKENDS THE DEADLINE FOR PAYMENT OF LUMP SUM ENTRY FEE: 15 APRIL 2026
THE TEAM ENTRY FEE	100 € / EVENT MINIMUM 2 DRIVERS, MAXIMUM 3 DRIVERS

Contacts

WEB **WWW.SWIFTCUPEUROPE.COM**

FACEBOOK: **WWW.FACEBOOK.COM/SWIFTCUPEUROPE**

EGON BURKUS
PROMOTER

GFS RACING TEAM
HUNGARY
2135 CSÖRÖG, ALKOTMÁNY U. 17.
EMAIL: GFS@GFS.HU
PHONE: +36 30 9322 031

EVA TANCZOS
ORGANISER
ENGLISH

EMAIL: EVA.TANCZOS@GFS.HU
PHONE: +36 30 7375 836